

Steady delivery of workpieces of all sizes

With low vibration frequencies of 50 to 90 Hz and a large amplitude of 1.2 mm, this series is suited to workpieces from 10 mm up in size. Bowl diameters from 250 to 1,100 mm can be accommodated, to give powerful feeder performance.



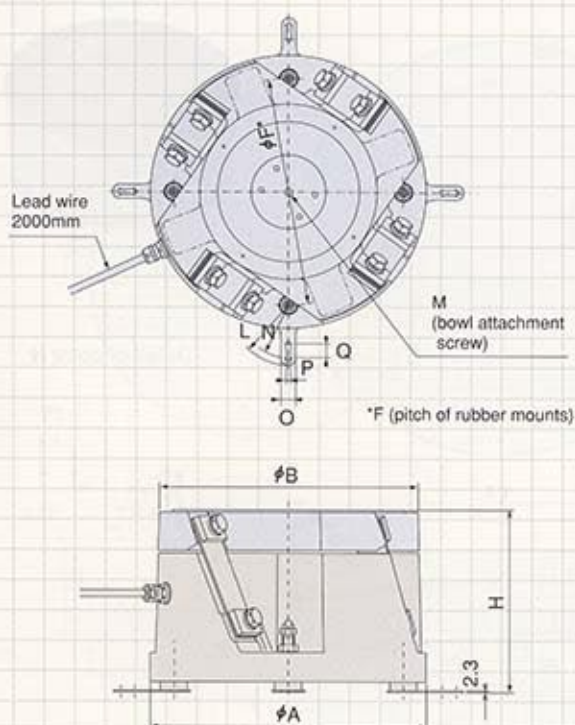
Specifications

Model		ER-25B	ER-30B	ER-38B	ER-45B	ER-55B	ER-65B	ER-75B
Drive unit outer diameter	mm	φ260	φ310	φ390	φ460	φ560	φ660	φ760
Drive unit height	mm	198	225	264	286	321	321	321
Drive unit weight	kg	30	48	80	115	160	200	260
Leaf-spring attachment angle	degree				20			
Rated voltage	V				200 (*1)			
Rated current	A	1.0	1.5	2.0	2.5	5.0	5.0	5.0
Vibration frequency	Hz				50~90			
Unprocessed bowl diameter (cylindrical)	mm	250	300	375	450	550	650	750
Max. bowl diameter (cylindrical)	mm	400	500	600	700	820	970	1100
Max. amplitude (periphery of standard cylindrical bowl)	mm	1.2			1.4			
Max. loaded weight (workpieces + bowl weight)	kg	8	12.5	17	26	70	85	120
Power cable	mm ²	0.75	0.75	1.25	1.25	2.0	2.0	2.0
Compatible controllers (*2)	AC200V	Single	C10-1VF		C10-3VF		C10-5VF	
		Twin			C9-3VFT-2		—	
	AC100V	Single	C10-1VF+C10-TR		C10-3VF+C10-TR		—	
		Twin			C9-3VFT-1		—	

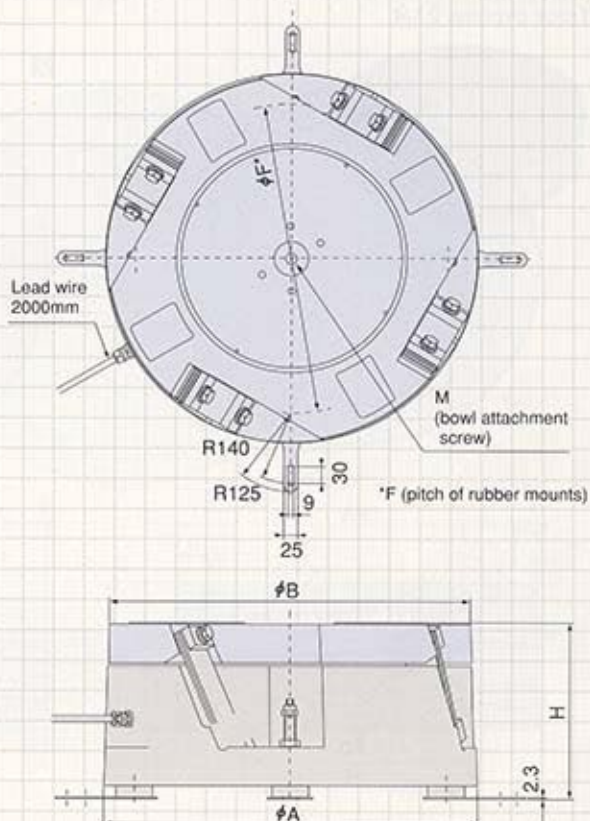
Notes *1 With an AC100V power source, use C10-TR transformer (sold separately).

*2 Standard controller is AC200V single type

ER-25B/30B/38B/45B

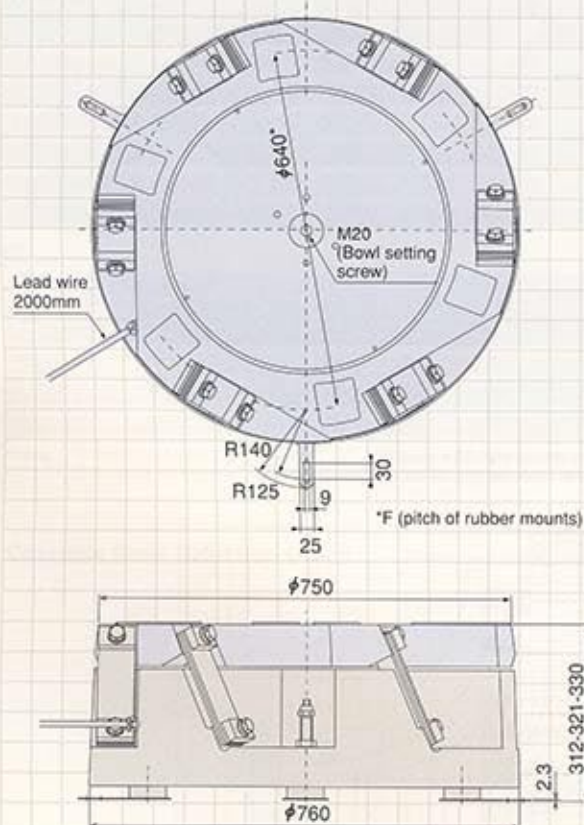


ER-55B/65B



Mounts can be affixed in any desired alignment.

ER-75B



Unit: mm

Model	H	ϕA	ϕB	M	ϕF	L	N	O	P	Q
ER-25B	194-198-202	260	250	M12	216	58	50	16	7	10
ER-30B	218-225-232	310	300	M12	252	85	75	20	7	20
ER-38B	257-264-271	390	375	M16	324	85	75	20	7	20
ER-45B	280-286-292	460	450	M16	390	85	75	20	7	20

Unit: mm

Model	H	ϕA	ϕB	M	ϕF
ER-55B	312-321-330	560	550	M20	450
ER-65B	312-321-330	660	650	M20	550
ER-75B	312-321-330	760	750	M20	640