

# LF series — Direct Mount Type

## Simple and compact. Handles a wide range of micro-sized and precision parts

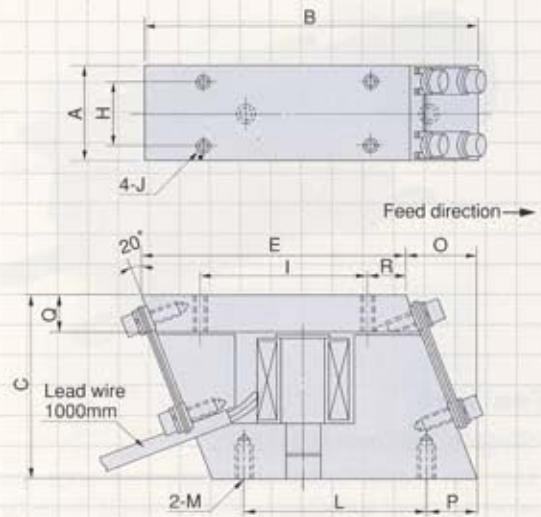
Developed for stabilized delivery of non-specialized micro-sized and precision parts, this series uses a small, electromagnetic drive unit that is simple and compact. Unmounted, with full wave operation to give excellent conveyance capacity for small volumes of non-specialized micro-sized workpieces. Maintenance is very straightforward and minimizes costs.



### Features

- **Handles a wide range of small parts**  
Handles a wide range of non-specialized micro-sized, precision parts
- **Simple and low cost**  
Provides a simple, low-cost solution for small-volume applications.
- **Easy, convenient installation**  
Compact design allows easy, convenient installation.

### LF-02/04 Dimensions



### Specifications

Model	Rated Voltage (V)	Rated Current (A)	Vibration frequency (Hz)	Weight (kg)	Standard compatible controllers
LF-02	100/110	0.12	100/120	0.42	C4-5B
LF-04	100/110	0.22	100/120	0.95	C10-1VF

### Dimensions Chart

Model	A	B	C	E	H	I	J	L	M	O	P	Q	R
LF-02	22	approx. 81	44.3	65	15	40	M3	40	M4	16	15	9	10
LF-04	32	approx. 101	57.3	80	20	50	M4	55	M5	21	15	12	12

Unit: mm

### Chute Specifications

Compatible linear feeder	Maximum length	Maximum width	Weight (kg)
LF-02	200	20	0.2
LF-04	300	30	0.4

Unit: mm