

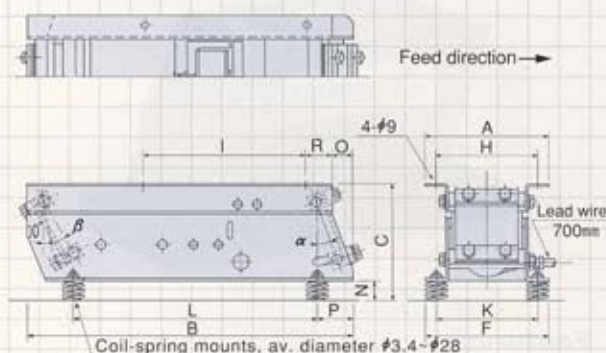
LF series — Coil-spring vibro-isolating type

Swift, stable conveyance of high volumes of large workpieces

Large-capacity electromagnetic drive unit has strong coil springs positioned at front and rear, and drive controlled by amplitude angle adjustment, to give speedy, steady, straight-line delivery of large-sized workpieces. The low-floored half-wave drive provides uniform amplitude and vibration frequency to eliminate irregularities during high-volume conveyance of large workpieces.



LF-30/40 Dimensions



Features

- Large size feeder provides smooth workpiece delivery

Large, vibro-isolating feeder that keeps the flow of workpieces smooth through adjustment of leaf-spring angle.

- Fast, stable delivery of high volumes of large workpieces

Extremely high conveyance efficiency allows high-volume delivery of large workpieces.

- Dial control for free adjustment of conveyance speed

By changing the vibration frequency and amplitude with the dial control, delivery speed can be freely adjusted.

Specifications

Model	Leaf-spring adjustment angle		Rated voltage (V)	Rated current (A)	Vibration frequency (Hz)	Weight (kg)	Standard compatible controller
	α	β					
LF-30	0°~20°	10°~30°	200/220	1.5	50/60	25	C4-5B
LF-40	0°~20°	10°~30°	200/220	1.6	50/60	33	C10-3VF

Dimensions Chart

Model	A	B	C	F	H	I	K	L	N	O	P	R
LF-30	182	410	162	180	156	190	150	295	30	30	55	40
LF-40	196	500	177	186	166	250	154	375	30	30	55	40

Unit: mm

Chute Specifications

Applicable linear feeder	Maximum length	Maximum width	Weight (kg)
LF-30	650	120	3.5
LF-40	750	150	5.5

Unit: mm

Note: Chute must straddle drive unit to distribute weight.