

Linear Feeders LFB/HLFB series — Leaf-spring vibro-isolating type

Ideal vibration characteristics to cut bouncing

A high-precision electromagnetic drive unit ideal for use with chutes for precision parts, to meet present-day requirements for rapid processing of micro-sized workpieces. Vibro-isolating leaf-springs are installed front and rear to absorb rebound, and vibration characteristics can be adjusted to match the workpiece. Giving uniform vibration the whole length of the trough, this series provides smooth delivery of the most delicate, easily damaged parts with minimal bouncing.



Features

- **Leaf-spring vibro-isolating type ideal for precision parts**

This leaf-spring vibro-isolating series is ideal for micro-sized, flat and precision parts.

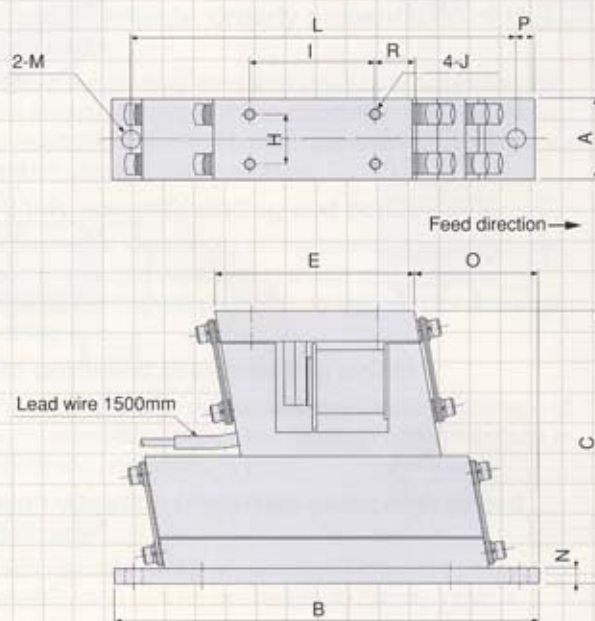
- **Minimizes bouncing**

Adjustable vibration characteristics give increased delivery efficiency while minimizing workpiece bouncing.

- **Compact and high precision**

Compact unit accommodates demands for rapid processing, providing high precision conveyance of micro-sized and precision parts.

LFB/HLFB-02/04 Dimensions



Specifications

Model	Rated Voltage (V)	Rated Current (A)	Vibration frequency (Hz)	Weight (kg)	Standard compatible controllers
LFB-02	100/110	0.12	100/120	1	C10-1VF C10-1VFEF C9-03VFT
LFB-04	100/110	0.16	100/120	2.7	
HLFB-02	100/110	0.25	220~360	1	
HLFB-04	100/110	0.30	220~360	2.7	

Dimensions Chart

Model	A	B	C	E	H	I	J	L	M	N	O	P	R
HLFB/LFB-02	22	130	86	65	15	40	M3	120	φ6	4.5	45	5	13
HLFB/LFB-04	32	170	108	80	20	50	M4	155	φ7	6	49	7.5	15

Unit: mm

Chute Specifications

Compatible linear feeder	Maximum length	Maximum width	Weight (kg)
HLFB/LFB-02	200	20	0.2
HLFB/LFB-04	300	30	0.4

Unit: mm

Note: Chute must straddle drive unit to distribute weight.