

Accommodates a wide range of chutes for ideal conveyance

The variable frequency controller installed as standard eliminates need for leaf-spring and core-gap adjustments. Easy installation and coordination make it much easier to use, and by adjusting position of the rear-end weight, conveyance irregularities can be quickly and easily eliminated. With minimal lateral movement, there is virtually no vibration interference, making it easy to combine with parts feeders for stabilized delivery. The three models in this series allow a full range of equipment combinations, and cover all shapes and sizes of workpiece.



Features

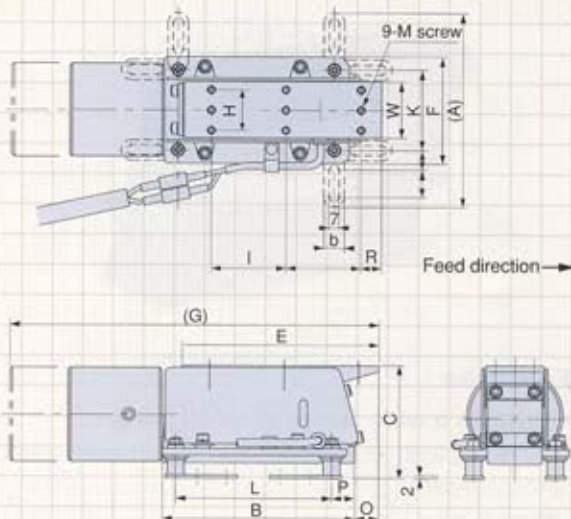
• Simple, uniform vibration

Use with heavier chutes and longer overhangs opens a wider range of applications. Adjustment is made by positioning the rear-end weight, so conveyance can easily be kept uniform without expert skills.

• Energy saving type

Energy consumption cut by half, compared with our earlier models.

LFG-400/550/700 Dimensions



Specifications

Model		LFG-400	LFG-550	LFG-700
Rated voltage	V		200	
Rated current	A	0.08	0.15	0.2
Vibration frequency	Hz	80~110	75~100	65~90
Drive unit weight	kg	4.3	8.5	14.0
Leaf-spring angle	degree		15	
Max. amplitude	mm	0.65	0.75	0.9
Compatible controller	AC200V	Single	C10-1VF	
		Twin	C9-3VFT-2	
	AC100V	Single	C10-1VF+C10-TR	
		Twin	C9-3VFT-1	

Dimensions Chart

Model	A	B	C	E	F	G	H	I	K	L	M	O	P	R	W	b	i	n
LFG-400	145	142	84	145	80	230~270	28	55	60	115	6	18	17	15	42	15	20	15
LFG-550	181	202	104	200	100	315~375	38	75	75	165	6	21	22	20	52	20	25	17.5
LFG-700	191	257	114	250	110	400~460	46	90	85	215	6	22	27	25	61	20	25	17.5

Unit: mm

Chute Specifications, including Overhang

Model	Max. length	Max. width	Min. thickness	Weight range (kg)	Basic position (at max. chute length)				
					L1	L2	L3	L4	L5
LFG-400	400	50	10	0.8~2.0	105	150	20	145	18
LFG-550	550	65	14	1.4~3.5	140	210	25	200	21
LFG-700	700	75	16	2.2~5.5	180	270	30	250	22

Unit: mm

LFG Series

