

# ME/HME/HSE series—High Frequency Mini Parts Feeders

High-speed, high-precision handling of micro-sized parts and electronic chips. Compact design and versatility to handle a wide range of small parts.

Designed for the automatic conveyance and stable delivery of delicate components that are easily scratched or damaged, these feeders provide high-speed, high-precision parts handling. With the fine vibration of full wave drive and a soft start function, all types of tiny parts for cameras, watches etc. can be handled. Compact design takes up minimal space.



## Features

- **Smooth, reliable, orderly presentation of tiny, thin parts**

High vibration frequency and small amplitude allow for the orderly delivery of micro-sized, thin and complex-shaped parts, which is hard to achieve with conventional feeder vibration characteristics.

- **Highly accurate sorting and conveyance**

Bouncing of workpieces during conveyance is reduced, and even slight variations in shape and weight distribution of small parts can be detected for accurate sorting.

- **No problems at connecting points**

With little vibration displacement, there is no damage to workpieces caused by gaps between bowl and chute or chute and non-vibrating parts.

- **High vibration frequency gives high speed delivery**

High vibration frequency conveys workpieces smoothly, speedily and with no resistance, to supply a stable quantity with little variation, for a significant improvement in efficiency.

- **No readjustment of leaf-spring necessary**

Once set, leaf-spring requires no further adjustment. With feedback control for amplitude, changes over time in voltage or load do not cause fluctuations in vibration.

- **Compact design, with a height adjustment function**

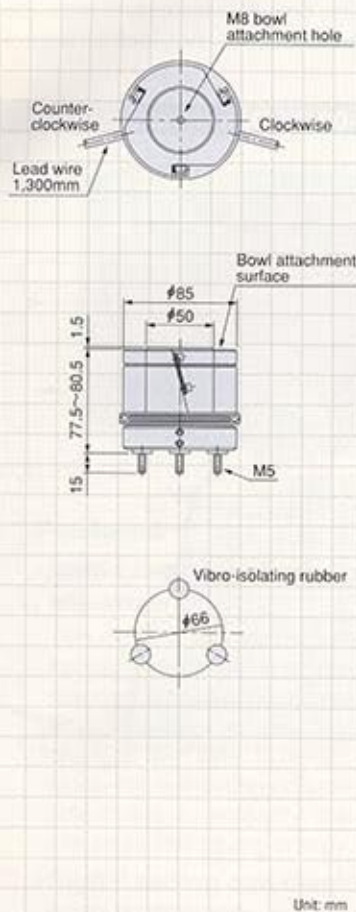
Down-sized design for maximum space-saving, with a vibro-isolating base. Bowl height can be adjusted within 3 mm range to simplify positioning.

## Specifications

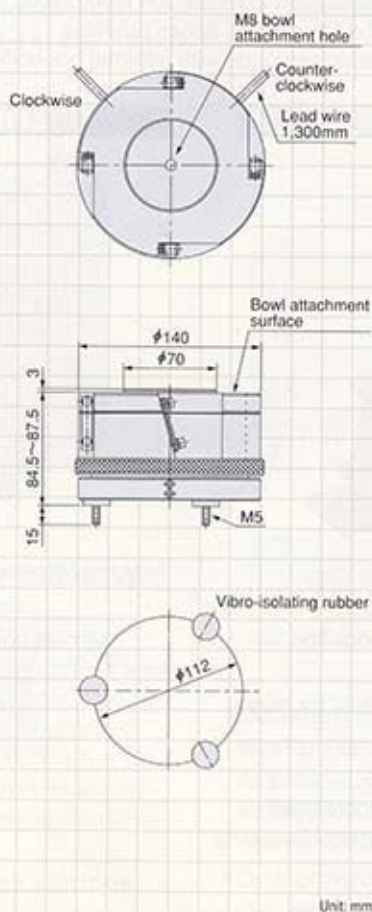
Model	Rated Voltage (V)	Rated Current (A)	Vibration frequency (Hz)	Weight (kg)	Loaded weight (kg)	Max. bowl diameter (mm)	Compatible standard controller
ME-08	100/110	0.30	100/120	2.7	0.6	φ140	C10-1VF C10-1VFEF C9-03VFT
ME-14		0.55		9	2.0	φ230	
HME-08		0.15	220~360	2.7	0.6	φ140	
HME-14		0.30		9	2.0	φ230	
HSE-14		0.30		9	2.0	φ230	

Note: Loaded weight is permissible weight of bowl and work.

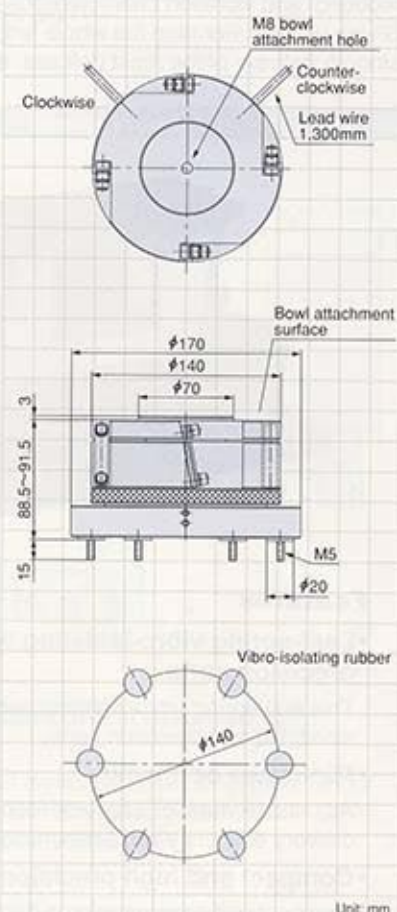
## HME-08/ME-08



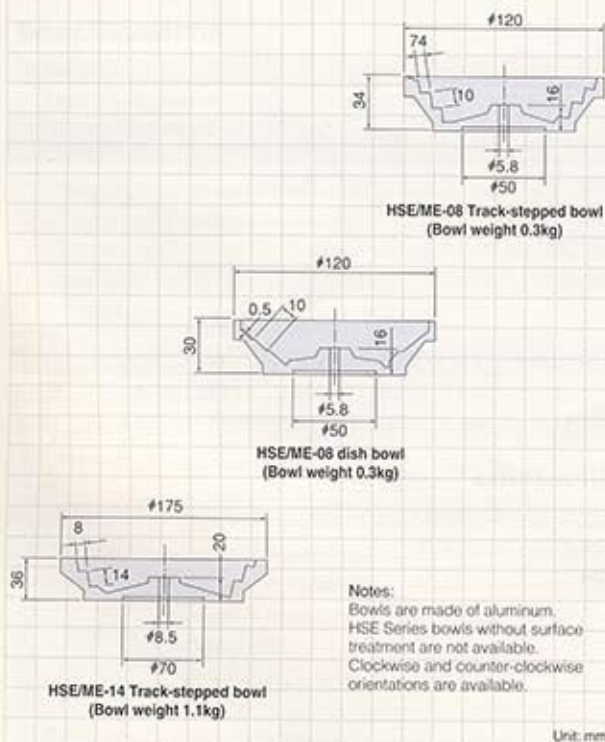
## HME-14/ME-14



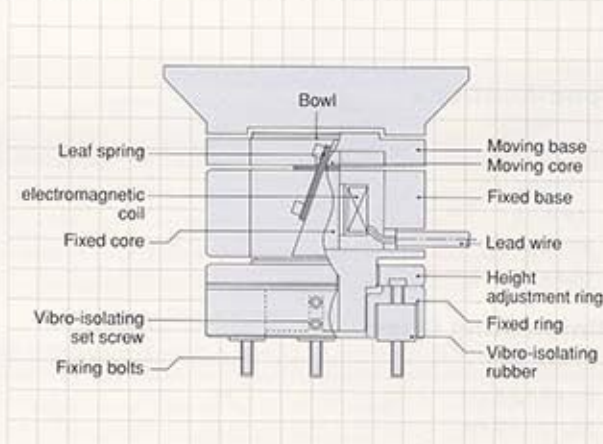
## HSE-14



## HSE/ME Bowl



## HSE/ME Structural Diagram



Notes:  
Bowls are made of aluminum.  
HSE Series bowls without surface treatment are not available.  
Clockwise and counter-clockwise orientations are available.